

4

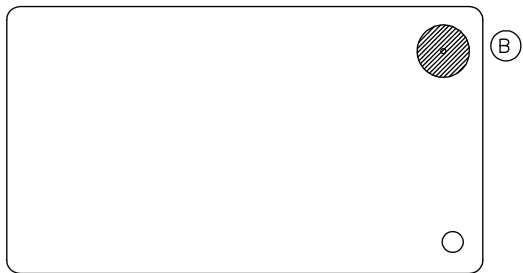
3

2

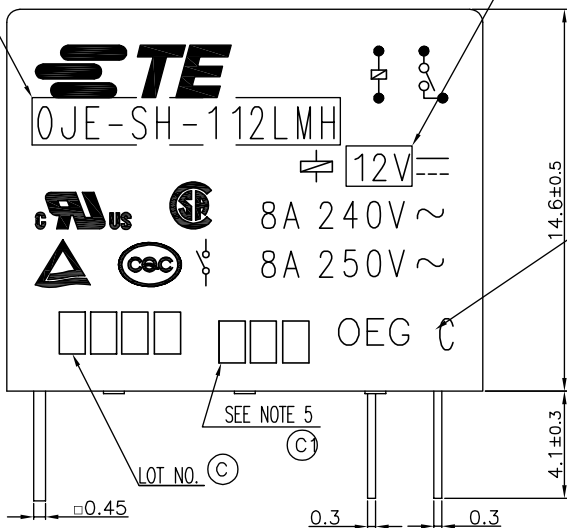
1

THIS DRAWING IS UNPUBLISHED. RELEASED FOR PUBLICATION  
 © COPYRIGHT - By - TE CONNECTIVITY ALL RIGHTS RESERVED.

LOC	DIST	REVISIONS				
P	LTR	DESCRIPTION	DATE	DWN	APVD	
HB	-	C	CHANGE DATE CODE&TE LOGO ECO-08-007851	07-Apr-08	CY.Z	BH.Y
		C1	CHANGE LOGO& ADD LINE IDENTIFICATION ECO-12-001771	21Aug2012	YS.H	BH.Y

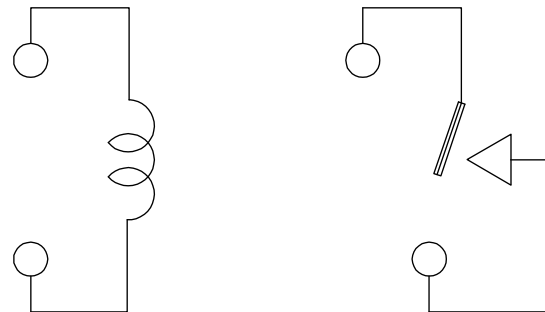
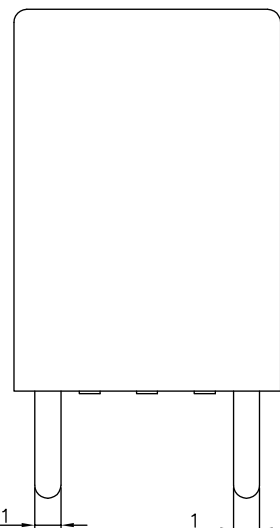


PART A



PART B

MADE IN CHINA



CONNECTION FIGURE

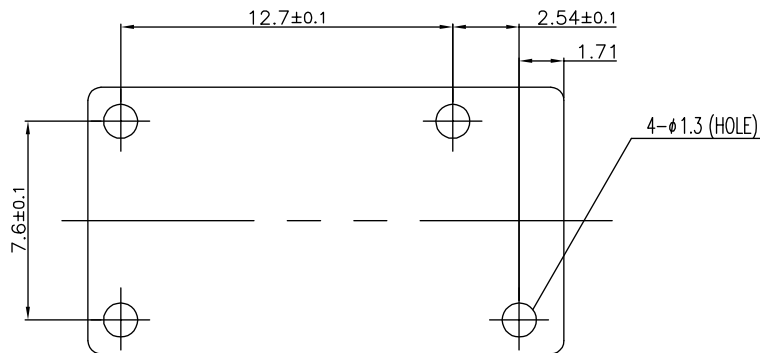
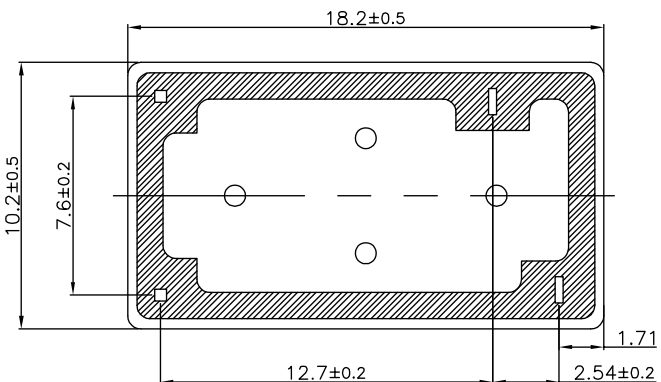


FIGURE FOR PRINTED CIRCUIT BOARD PROCESSING (BOTTOM VIEW)



THIS DRAWING IS A CONTROLLED DOCUMENT.		DWN	H.SASAKI		TE Connectivity	
		CHK	Y.OIKAWA			
		APVD	S.NAGAI		NAME	
DIMENSIONS: mm		TOLERANCES UNLESS OTHERWISE SPECIFIED:		OJE-SH-LMH CUSTOMER DRAWING		
		0 PLC ±-		SIZE		
		1 PLC ±-		CAGE CODE		
		2 PLC ±-		DRAWING NO		
		3 PLC ±-		RESTRICTED TO		
		4 PLC ±-		A3 00779 C= 1461403		
		ANGLES ±-		SCALE 5:1 SHEET 1 of 2 REV C1		
MATERIAL		FINISH		CUSTOMER DRAWING		

THIS DRAWING IS UNPUBLISHED. RELEASED FOR PUBLICATION  
 © COPYRIGHT - By - TE CONNECTIVITY ALL RIGHTS RESERVED.

LOC	DIST	REVISIONS					
HB	-	P	LTR	DESCRIPTION	DATE	DWN	APVD
		-	-	SEE SHEET 1	-	-	-

ACTIVE	1461403-5	OJE-SH-124LMH	107-79010	24V	OJE-SH-124LMH	f
ACTIVE	1461403-4	OJE-SH-112LMH	107-79010	12V	OJE-SH-112LMH	e
ACTIVE	1461403-2	OJE-SH-109LMH	107-79010	9V	OJE-SH-109LMH	d
Ⓒ1 OBSOLETE	1461403-1	OJE-SH-106LMH	107-79010	6V	OJE-SH-106LMH	c
ACTIVE	1461403-3	OJE-SH-105LMH	107-79010	5V	OJE-SH-105LMH	b
Ⓒ1 OBSOLETE	1461403-6	OJE-SH-103LMH	107-79010	3V	OJE-SH-103LMH	a
PART STATUS	TE PART NO	TE TYPE NAME	PACKAGE SPEC	PART B	PART A	TYPE

RELAY TYPE

Ⓒ Ⓑ NOTES:  
 1.LOT NO. SYSTEM AS FOLLOWING:  
 0 5 4 7  
 WEEK  
 YEAR

Ⓒ1 5.ADD LOT NO. SYSTEM AS FOLLOWING;  
 I, DIGITS FOR DAY OF THE WEEK  
 1...MONDAY IN THIS WEEK;  
 2...TUESDAY IN THIS WEEK;  
 .....  
 7...SUNDAY IN THIS WEEK  
 II, DIGITS FOR SHIFT OF THE DAY  
 1...DAY SHIFT IN THIS DAY;  
 2...NIGHT SHIFT IN THIS DAY;

Ⓒ 2.TERMINAL DIMENSION IS BEFORE SOLDER DIP;  
 Ⓒ 3.FOR THE TIN-PLATING OF THE PINS:  
 +0.1mm FOR WIDTH,THICKNESS AND DIAMETER.  
 +0.5mm FOR LENGTH.  
 Ⓒ 4.MARKING FROM INK TO LASER.

III, ONE CHARACTER DISTINGUISH THE LINE IDENTITY,  
 SUCH AS: A,B.....Z

		UV RESIN	SEEL (VENT HOLE)	16
		EPOXY RESIN	SEEL (BASE & BOBBIN)	15
		3UEW	MAGNETIC WIRE	14
94V-0		P.B.T	CASE	13
94V-0		P.B.T	BASE	12
94V-0		P.B.T	BOBBIN	11
	SOLDER DIP	C.P WIRE	COIL TERMINAL	10
94V-0		P.P.S	CARD	9
		Ag ALLOY	MOVABLE CONTACT	8
		Ag ALLOY	NO.CONTACT	7
		STEEL	HINGE SPRING	6
	SOLDER DIP	Cu ALLOY	NO.TERMINAL	5
	SOLDER DIP	Cu ALLOY	MOVABLE SPRING	4
	NIP	STEEL	CORE	3
	NIP	STEEL	ARMATURE	2
	NIP	STEEL	YOKE	1
INCOMBUSTIBILITY	TREATMENT	MATERIAL	DESCRIPTION	ITEM

THIS DRAWING IS A CONTROLLED DOCUMENT.		DWN	H,SASAKI	-
DIMENSIONS: mm		CHK	Y.OIKAWA	-
TOLERANCES UNLESS OTHERWISE SPECIFIED:		APVD	S.NAGAI	-
0 PLC ±-		PRODUCT SPEC	SEE PRODUCT SPEC	-
1 PLC ±-		APPLICATION SPEC	-	-
2 PLC ±-		WEIGHT	-	-
3 PLC ±-		SIZE	A3	-
4 PLC ±-		CAGE CODE	00779	-
ANGLES ±-		DRAWING NO	G= 1461403	-
FINISH		RESTRICTED TO	-	-
MATERIAL		CUSTOMER DRAWING	SCALE	5:1
		SHEET	2 of 2	REV
				C1



OJE-SH-LMH CUSTOMER DRAWING