

CEL (California Eastern

CG2409M2-C4

Hlutanúmer:

CG2409M2-C4

Framleiðandi / Vörumerki:

CEL (California Eastern Laboratories)

Vörulýsing

GAAS MMIC SPDT HI POWER SWITCH

Gagnablöð:

CG2409M2-C4.pdf

RoHS Staða

Leiða frjáls / RoHS samhæft

Ástand á lager

183876 pcs stock

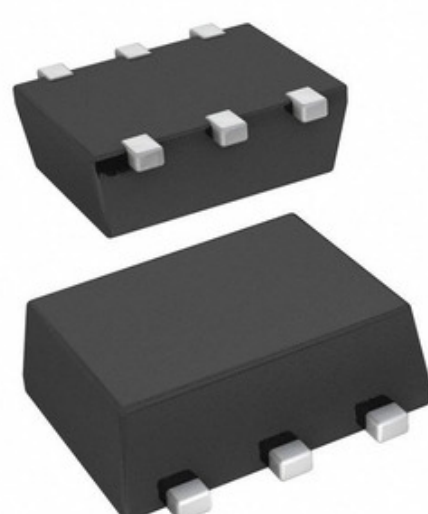
Skip frá

Hong Kong

Sending vegur

DHL/Fedex/TNT/UPS/EMS

Laboratories)



Mynd getur verið fulltrúi. Sjá upplýsingar um upplýsingar um vörur.

Upplýsingar um CG2409M2-C4

| | |
|---------------------------------|-------------------------------------------------------------|
| HLUTANÚMER | CG2409M2-C4 |
| FRAMLEIÐANDI | CEL (California Eastern Laboratories) |
| LÝSING | GAAS MMIC SPDT HI POWER SWITCH |
| LEIÐA FRJÁLS STAÐA / ROHS STAÐA | Leiða frjáls / RoHS samhæft |
| MAGN Í BODI | 183876 pcs |
| GÖGN | CG2409M2-C4.pdf |
| SPENNA - FRAMBOÐ | 1.8 V ~ 5 V |
| TOPOLOGY | - |
| PRÓFUNARTÍÐNI | 3GHz |
| BIRGIR TÆKI PAKKI | 6-Minimold |
| RÖÐ | - |
| RF TEGUND | 802.11a/b/g/n/ac |
| PÖKKUN | Tape & Reel (TR) |
| PAKKI / TILFELLI | 6-VSSOP, SC-88, SOT-363 |
| P1DB | - |
| ÖNNUR NÖFN | CG2409M2-C4TR |
| VINNUHITASTIG | -45°C ~ 85°C |
| VÖKTUNARNÆMISSTIG (MSL) | 1 (Unlimited) |
| LEIÐA FRJÁLS STAÐA / ROHS STAÐA | Lead free / RoHS Compliant |
| EINANGRUN | 21dB |
| INNSETNINGARTAP | 0.5dB |
| IMPEDANCE | 50 Ohm |
| IIP3 | 62dBm |
| TÍÐNISVIÐ | 50MHz ~ 3.8GHz |
| LÖGUN | - |
| NÁKVÆM LÝSING | RF Switch IC 802.11a/b/g/n/ac SPDT 3.8GHz 50 Ohm 6-Minimold |
| HRINGRÁS | SPDT |

Svipaðir merkingar

| | | |
|---------------------------------------------------|---------------------------------------------------|---------------------------------------------------------|
| CEL (California Eastern Laboratories) CG2409M2-C4 | CG2409M2-C4 dreifingaraðili | CG2409M2-C4 Birgir |
| CG2409M2-C4 Verð | CG2409M2-C4 Myndir | CG2409M2-C4 Image |
| CG2409M2-C4 PDF skjal | CG2409M2-C4 Sækja gagnapakkan | CG2409M2-C4 gagnablöð |
| CG2409M2-C4 lager | Kaupa CG2409M2-C4 | Kaupa CEL (California Eastern Laboratories) CG2409M2-C4 |
| CEL (California Eastern Laboratories) CG2409M2-C4 | CEL (California Eastern Laboratories) Birgir | CEL (California Eastern Laboratories) dreifingaraðili |
| CEL (California Eastern Laboratories) CG2409M2-C4 | California Eastern Labs CG2409M2-C4 | California Eastern Laboratories CG2409M2-C4 |
| CEL CG2409M2-C4 | CEL (California Eastern Laboratories) CG2409M2-C4 | |

skyldar vörur

| | |
|------------------------------------------------------------------------------------------------------------------------------------------------------------------------|------------------------------------------------------------------------------------------------------------------------------------------------------------------------|
| <p>CG2409X3 Framleiðendur: CEL (California Eastern Laboratories) Lýsing: GAAS MMIC SPDT HI POWER SWITCH Á lager: 50543 pcs</p> <p>RFQ</p> | <p>CG2415M6-C2 Framleiðendur: CEL (California Eastern Laboratories) Lýsing: RF IC SWITCH SPDT 6GHZ Á lager: 221045 pcs</p> <p>RFQ</p> |
| <p>CG2404M1A-DWB Framleiðendur: General Cable Lýsing: 240F 62.5 MM LT SINGLE JKT Á lager: 9 pcs</p> <p>RFQ</p> | <p>CG2350SN Framleiðendur: Hamlin / Littelfuse Lýsing: GDT 350V 20KA Á lager: 78390 pcs</p> <p>RFQ</p> |
| <p>CG2409M2-EVAL Framleiðendur: CEL (California Eastern Laboratories) Lýsing: GAAS MMIC SPDT HI POWER SWITCH Á lager: 718 pcs</p> <p>RFQ</p> | <p>CG2409X3-EVAL Framleiðendur: CEL (California Eastern Laboratories) Lýsing: GAAS MMIC SPDT HI POWER SWITCH Á lager: 693 pcs</p> <p>RFQ</p> |
| <p>CG2409X3-C2 Framleiðendur: CEL (California Eastern Laboratories) Lýsing: GAAS MMIC SPDT HI POWER SWITCH Á lager: 64609 pcs</p> <p>RFQ</p> | <p>CG2409M2 Framleiðendur: CEL (California Eastern Laboratories) Lýsing: RF SWITCH 3GHZ SMD Á lager: 72507 pcs</p> <p>RFQ</p> |
| <p>CG2404M1F-DWB Framleiðendur: General Cable Lýsing: 240F 62.5MM LT SNGL JKT ARMOR Á lager: 8 pcs</p> <p>RFQ</p> | <p>CG2404H1A-DWB Framleiðendur: General Cable Lýsing: 240F 62.5MM LT DUAL JKT Á lager: 8 pcs</p> <p>RFQ</p> |
| <p>CG2415M6 Framleiðendur: CEL (California Eastern Laboratories) Lýsing: RF SWITCH 6GHZ SMD Á lager: 54653 pcs</p> <p>RFQ</p> | <p>CG2404H1F-DWB Framleiðendur: General Cable Lýsing: 240F 62.5MM LT DUAL JKT ARMOR Á lager: 7 pcs</p> <p>RFQ</p> |