

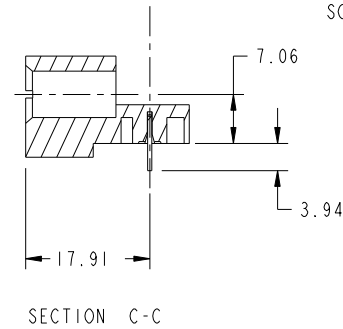
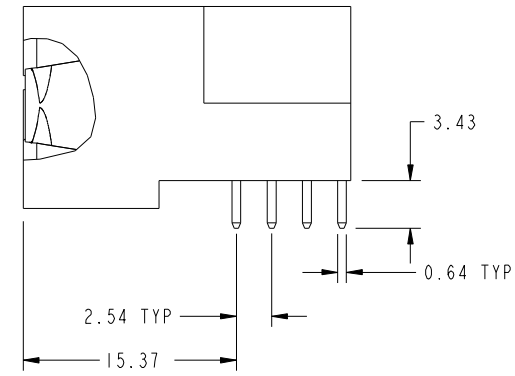
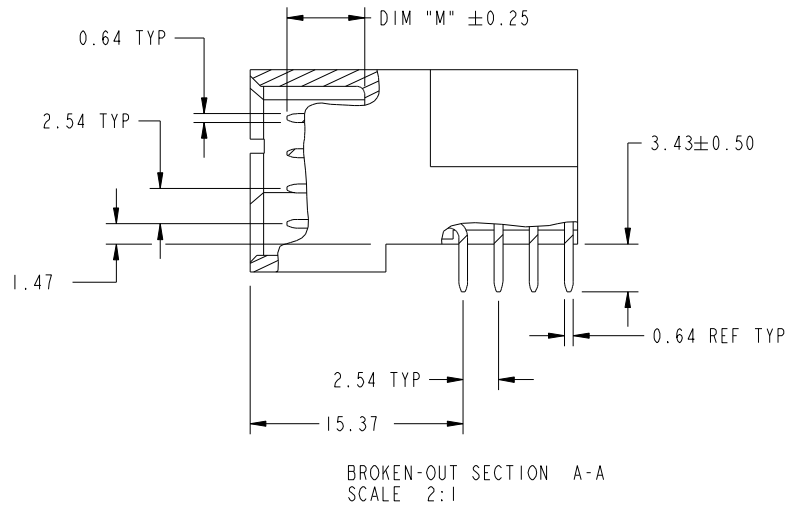


Tous droits strictement reserves. Reproduction ou communication a des tiers interdite sous quelque forme que ce soit sans autorisation écrite du propriétaire. Propriete de c FCI. Droits de reproduction FCI.

All rights strictly reserved. Reproduction or issue to third parties in any form whatever is not permitted without written authority from the proprietor. Property of FCI. Copyright FCI.



PRODUCT NUMBER  
51730-179\_\_  
NOTE: 3



|             |                |    |      |          |                      |                                       |  |                |  |                    |  |
|-------------|----------------|----|------|----------|----------------------|---------------------------------------|--|----------------|--|--------------------|--|
| mat'l code  |                |    |      | SEE NOTE |                      | tolerances unless otherwise specified |  | CUSTOMER       |  | FCI                |  |
| ltr         | ecr no.        | dr | date | linear   | 0.X ±0.5             | projection                            |  | COPY           |  | www.fciconnect.com |  |
| A           |                |    |      | angles   | 0.XX ±0.25           | MIM                                   |  | title          |  | 4P + 20S + 3P      |  |
|             |                |    |      | dr       | 0.XXX ±0.1           | scale                                 |  | product family |  | PwrBlade           |  |
|             |                |    |      | enr      | 0° ±2°               | 1:1                                   |  | size           |  | 213                |  |
|             |                |    |      | chr      | Anson Liu 07/12/10   |                                       |  | dwg no         |  | sheet              |  |
|             |                |    |      | appd     | Jerome Chen 07/12/10 |                                       |  | A              |  | 2 of 4             |  |
|             |                |    |      |          | PM ZHENG 07/12/10    |                                       |  | 51730-179      |  |                    |  |
|             |                |    |      |          | JOSEPH HSIA 07/12/10 |                                       |  |                |  |                    |  |
| sheet index | revision sheet |    |      |          |                      |                                       |  |                |  |                    |  |

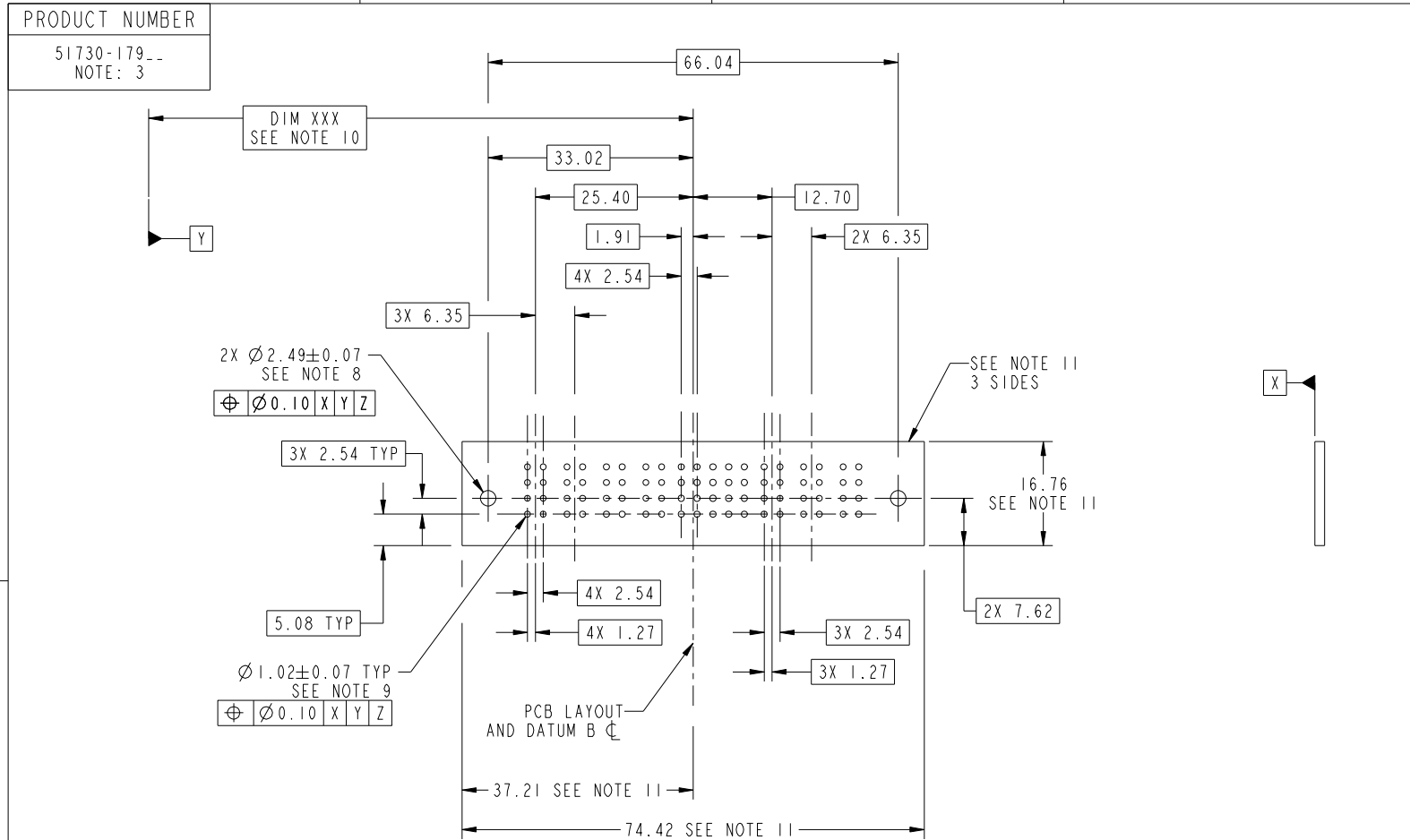
cage code 22526

Pro/E

Tous droits strictement reserves. Reproduction ou communication a des tiers interdite sous quelque forme que ce soit sans autorisation écrite du propriétaire. Propriete de c FCI. Droits de reproduction FCI.



All rights strictly reserved. Reproduction or issue to third parties in any form whatever is not permitted without written authority from the proprietor. Property of FCI. Copyright FCI.



RECOMMENDED PCB LAYOUT

|             |                |          |      |                                       |                      |            |  |  |  |
|-------------|----------------|----------|------|---------------------------------------|----------------------|------------|--|--|--|
| mat'l code  |                | SEE NOTE |      | tolerances unless otherwise specified |                      | CUSTOMER   |  | FCI  |  |
| ltr         | ecn no.        | dr       | date | linear                                | 0.X ± 0.5            | COPY       |  | www.fciconnect.com                         |  |
| A           |                |          |      |                                       | 0.XX ± 0.25          | projection |  | title                                      |  |
|             |                |          |      | angles                                | 0.XXX ± 0.1          |            |  | 4P + 20S + 3P<br>RIGHT ANGLE SOLDER HEADER |  |
|             |                |          |      | dr                                    | 0° ± 2°              |            |  | product family PwrBlade code               |  |
|             |                |          |      | enr                                   | Anson Liu 07/12/10   | scale      |  | size                                       |  |
|             |                |          |      | chr                                   | Jerome Chen 07/12/10 | 1:1        |  | dwg no                                     |  |
|             |                |          |      | appd                                  | PM ZHENG 07/12/10    |            |  | 51730-179                                  |  |
|             |                |          |      |                                       | JOSEPH HSIA 07/12/10 |            |  | sheet                                      |  |
| sheet index | revision sheet |          |      |                                       |                      |            |  | 3 of 4                                     |  |

cage code 22526

Pro/E

Tous droits strictement reserves. Reproduction ou communication a des tiers interdite sous quelque forme que ce soit sans autorisation écrite du propriétaire. Propriete de c FCI. Droits de reproduction FCI.



All rights strictly reserved. Reproduction or issue to third parties in any form whatever is not permitted without written authority from the proprietor. Property of FCI. Copyright FCI.

PRODUCT NUMBER  
51730-179--  
NOTE: 3

NOTES:

1. DIMENSIONS AND TOLERANCES ARE IN ACCORDANCE WITH ASME Y14.5M, 1994 UNLESS OTHERWISE SPECIFIED.

CONNECTOR NOTES:

- 2. HOUSING MATERIAL: UL 94 V-0 GLASS FILLED HIGH-TEMP THERMOPLASTIC  
POWER CONTACT MATERIAL: COPPER ALLOY  
SIGNAL PIN MATERIAL: COPPER ALLOY
- 3. SEE ITEM 1 & 2 IN PRINT 10064183 FOR PLATING SPEC OF 51730-179 AND 51730-179LF RESPECTIVELY.
- 4. MANUFACTURER'S NAME, DATE CODE AND OPTIONAL P/N TO APPEAR ON THIS SURFACE. THE P/N CAN BE OMITTED IF THERE IS NOT ENOUGH SPACE ON THIS SURFACE.
- 5. PRODUCT SPECIFICATION GS-12-149.  
APPLICATION SPECIFICATION BUS-20-067.
- 6. PACKAGED IN TRAYS.

PCB NOTES:

- 7. ALL HOLE DIAMETERS ARE FINISHED HOLE SIZE.
- 8. MOUNTING HOLES, WHERE APPLICABLE, ARE UNPLATED.
- 9.  $\varnothing 1.151 \pm 0.025$  DRILLED HOLES PLATED WITH  
0.008 MIN SnPb OR Sn OVER 0.03  
TO 0.08 Cu PLATING TO ACHIEVE  
 $\varnothing 1.02 \pm 0.07$  HOLE.
- 10. "DIM XXX" TO BE DETERMINED BY THE CUSTOMER.
- 11. CONNECTOR KEEP-OUT ZONE.

|             |                |          |      |                                       |                      |            |  |                |  |                           |       |
|-------------|----------------|----------|------|---------------------------------------|----------------------|------------|--|----------------|--|---------------------------|-------|
| mat'l code  |                | SEE NOTE |      | tolerances unless otherwise specified |                      | CUSTOMER   |  | FCI            |  | www.fciconnect.com        |       |
| ltr         | ecn no.        | dr       | date | linear                                | 0.X ± 0.5            | COPY       |  |                |  | title                     |       |
| A           |                |          |      |                                       | 0.XX ± 0.25          | projection |  |                |  | 4P + 20S + 3P             |       |
|             |                |          |      | angles                                | 0.XXX ± 0.1          |            |  |                |  | RIGHT ANGLE SOLDER HEADER |       |
|             |                |          |      | dr                                    | Anson Liu 07/12/10   | MIM        |  | product family |  | PwrBlade                  | code  |
|             |                |          |      | enrg                                  | Jerome Chen 07/12/10 |            |  | size           |  | dwg no                    | 213   |
|             |                |          |      | chr                                   | PM ZHENG 07/12/10    | scale      |  | A              |  | 51730-179                 | sheet |
|             |                |          |      | appd                                  | JOSEPH HSIA 07/12/10 | 1:1        |  |                |  | 4 of 4                    |       |
| sheet index | revision sheet |          |      |                                       |                      |            |  |                |  |                           |       |

cage code 22526

Pro/E