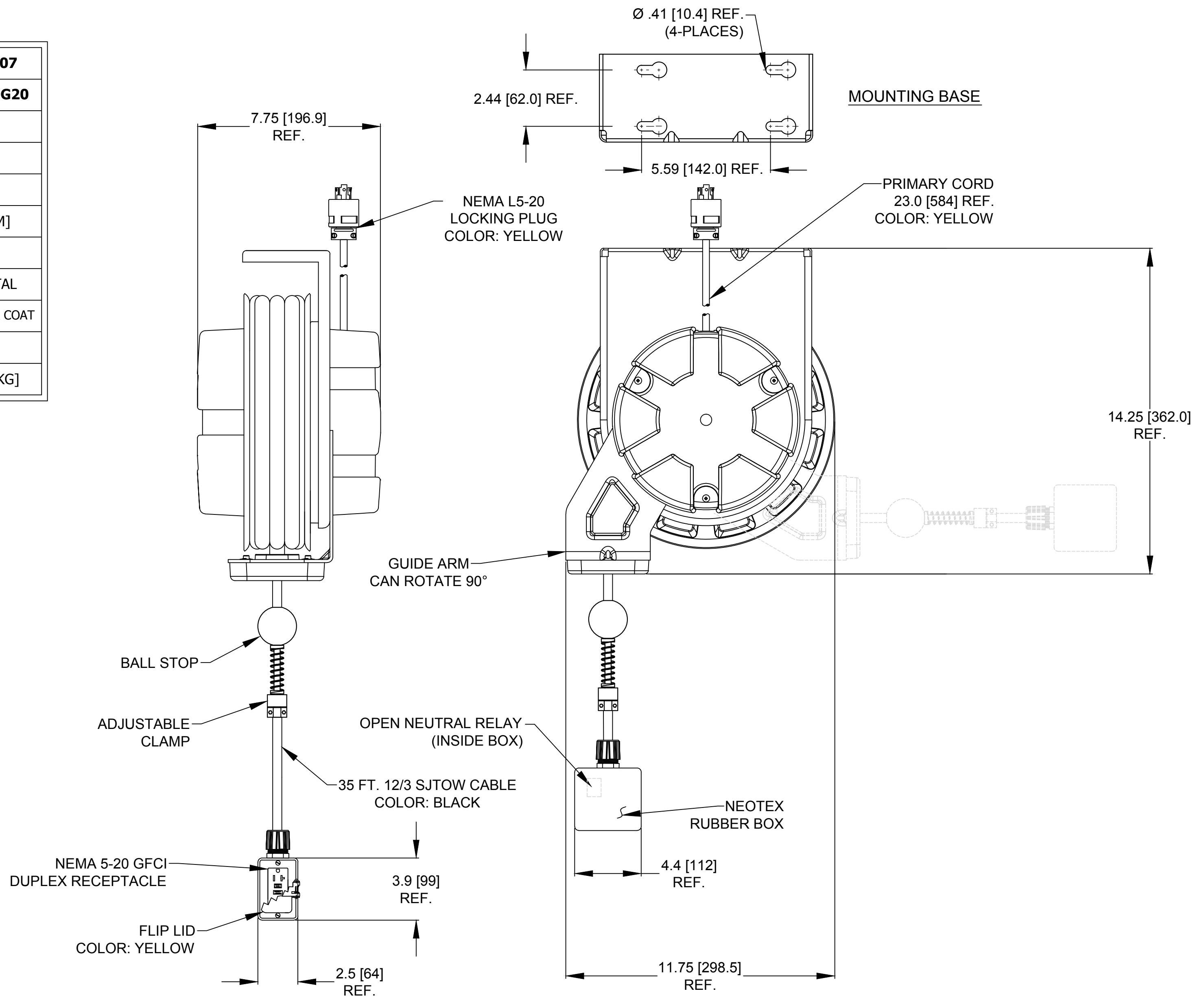



ORDER NO.	1300910207
WOODHEAD ENG. NO.	998L-3070G20
WIRE GAUGE	12
CONDUCTORS	3
AMPERAGE	20A
CORD LENGTH	35 FT [10.6 M]
CORD TYPE	SJTOW
CONSTRUCTION	SHEET METAL
PAINT	YELLOW POWDER COAT
REEL ENCLOSURE RATING	INDOOR
RETRACTION WEIGHT	3.0 LB [1.4 KG]



- NOTES:**
1. CABLE GUIDE IS ADJUSTABLE - DUAL POSITION
 2. RATCHET LOCK IS EASY TO DISENGAGE FOR CONSTANT TENSION.
 3. REEL CANNOT BE "LOCKED OUT" AT FULL TENSION.
 4. BALL STOP INCLUDED
 5. CSA CERTIFIED
FILE NO. LR29921 

RELEASE SALES DRAWING EC NO.: ICG2016-0112 DRWN: KCOX01 2015/07/30 CHKD: HRUIZ01 2015/07/30 APPR: JFMURPHY 2015/09/17	QUALITY SYMBOL	GENERAL TOLERANCES (UNLESS SPECIFIED)	DIMENSION STYLE INCH/MM	SCALE NTS	DESIGN UNITS INCH	THIRD ANGLE PROJECTION
	▽=0	mm INCH	DRAWN BY DATE	TITLE	CORD REEL W/3070G20 GFCI 35' #12-3 SJTOW LOCKING NEMA L5-20 PLUG	
	∇=0	4 PLACES ±--- ±---	KCOX01 2015/07/30	3 PLACES ±--- ±.005		
		2 PLACES ±.13 ±.010	CHECKED BY DATE	MOLEX INCORPORATED MOLEX		
		1 PLACE ±.25 ±.020	HRUIZ01 2015/07/30			
	ANGULAR ±1/2°	APPROVED BY DATE	MATERIAL NO. 1300910207 DOCUMENT NO. SD-130091-017 SHEET NO. 1 OF 1			
	DRAFT WHERE APPLICABLE MUST REMAIN WITHIN DIMENSIONS	JFMURPHY 2015/09/17				
		THIS DRAWING CONTAINS INFORMATION THAT IS PROPRIETARY TO MOLEX INCORPORATED AND SHOULD NOT BE USED WITHOUT WRITTEN PERMISSION				