

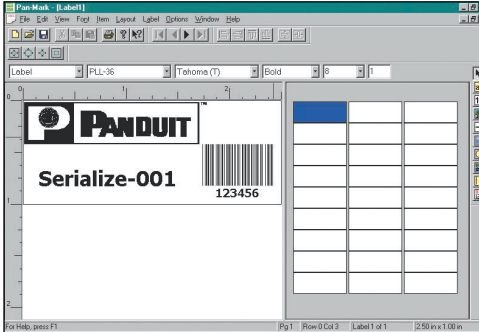


ELECTRICAL GROUP

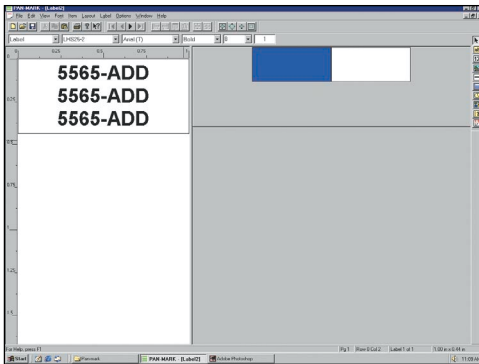
PRODUCT

BULLETIN

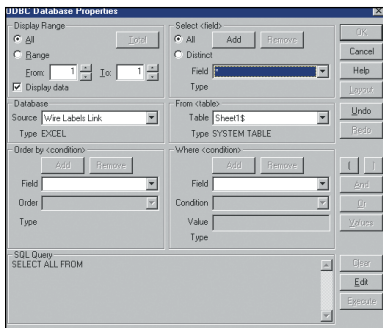
PAN-MARK® for WINDOWS 2.5



Easy serialization, bar code, and graphic import options make complete labels seem simple



Create multiple legends for wire marking



Import data from EXCEL and other Microsoft databases directly into PAN-MARK

## PAN-MARK for WINDOWS^ 2.5 Labeling Software

- 21 Resident Bar Code Symbologies
- Import data from most Microsoft databases such as EXCEL ^ and ACCESS ^
- Easy to enter different text on each label—simply type the text and press Page Down for the next label!
- Includes all of the latest label formats for PANDUIT Thermal Transfer, Ink Jet, Laser and Dot-Matrix Labels
- Easy to install

### Software Features

- Supports most WINDOWS printer drivers and can be used to drive PANDUIT PTR2E and PTR3E Printers
- ODBC (Open Data-Base Connectivity) allows importing of information from electronic databases such as EXCEL and ACCESS directly onto the label formats
- Uses a fill range of WINDOWS fonts including TrueType\* fonts
- Print from 2 pt. to 300 pt. + on the same label
- PANDUIT label formats ready to use
- Create custom label formats
- Wire Marker designs
- Image and text scaling
- Date, time, series, graphic and data import fields
- Format and label previews
- Print preview
- Multiple print range selection
- Text rotation and alignment

^WINDOWS, EXCEL and ACCESS are registered trademarks of Microsoft Corp.  
• TrueType is a registered trademark of Apple Computing, Inc.

Everywhere you need us!

# PANDUIT® PAN-MARK® for WINDOWS^ Labeling Software

## Bar Code Features

- Easily create certified bar codes
- Resident Bar Code Symbologies
  - Codabar
  - Code 128 (A, Auto, B, C)
  - Code 39 (Standard, Extended)
  - Code 93 (Standard, Extended)
  - EAN/JAN 13
  - EAN/JAN 8
  - HIBC/HIBC-LIC
  - Interleaved 2 of 5
  - MSI Plessey
  - PDF 417
  - UCC 128
  - UPC (A, E: 11 Digit, System 0, System 1)
  - Zip+4 Postal Codes

## Edit Functions

- Standard copy, cut and paste
- Copy multiple labels
- Remove, insert and find a label

## System Recommendations:

- Designed for WINDOWS 98, Me, 2000, NT4.X and XP
- Mouse or keyboard driven
- Recommend 486 processor, min. 8MB of RAM
- Only 30 MB of hard drive space

## Ordering Information

Part Number	Format	Std.Pkg. Qty.*
PROG-WIN2CD	CD-ROM	1

\*Order number of software packages required in multiples of Std. Pkg. Qty.

## Serialization

- Alpha, numeric, octal, hexadecimal and combinations
- Multiple serialized strings in same file
- Easy text and serialization combination
- Insert constants in an existing file

## Image Functions

- Import Bitmap (.BMP) graphic images into a label – add your own company logo to labels!
- Copy image from one label to others
- Image library of common electrical and communication symbols includes these symbols and more!



phone.bmp



fax.bmp



lightning.bmp



microwave.bmp



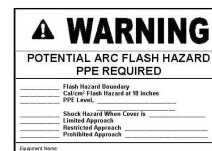
ground.bmp



panlogo.bmp



arcflsh1.bmp



arcflsh2.bmp



arcflsh3.bmp

For a copy of PANDUIT product warranties, log on to [www.panduit.com/warranty](http://www.panduit.com/warranty)

For a full line catalog (SA101N315C-ID), email us at [idinfo@panduit.com](mailto:idinfo@panduit.com) or call Customer Service at 800-777-3300.



ELECTRICAL GROUP

© PANDUIT CORP.  
 Tinley Park, Illinois 60477-3091  
 Customer Service: 800-777-3300  
 Technical Support: 866-871-4571  
 Email: [idinfo@panduit.com](mailto:idinfo@panduit.com)  
 Website: [http://www.panduiteeg.com/product\\_category/PS\\_software\\_-\\_labels.asp](http://www.panduiteeg.com/product_category/PS_software_-_labels.asp)



Contact your local authorized PANDUIT distributor for pricing. For your local Sales Office call 800-777-3300

PANDUIT CANADA  
 Markham, Ontario  
 Phone: 800-777-3300

PANDUIT EUROPE LTD.  
 London, UK  
 Phone: 44 208-601-7200

PANDUIT ASIA PACIFIC PTE. LTD.  
 Republic of Singapore  
 Phone: (65) 6379 6700

PANDUIT JAPAN  
 Tokyo, Japan  
 Phone: (81) (3) 3767-7011

PANDUIT LATIN AMERICA  
 Jalisco, Mexico  
 Phone: (52) (333) 666-2501

PANDUIT AUSTRALIA PTY. LTD.  
 Victoria, Australia  
 Phone: (61) 3-9794 9020