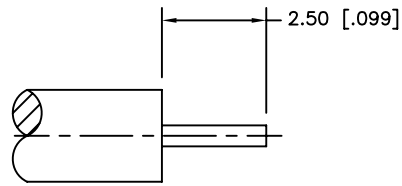
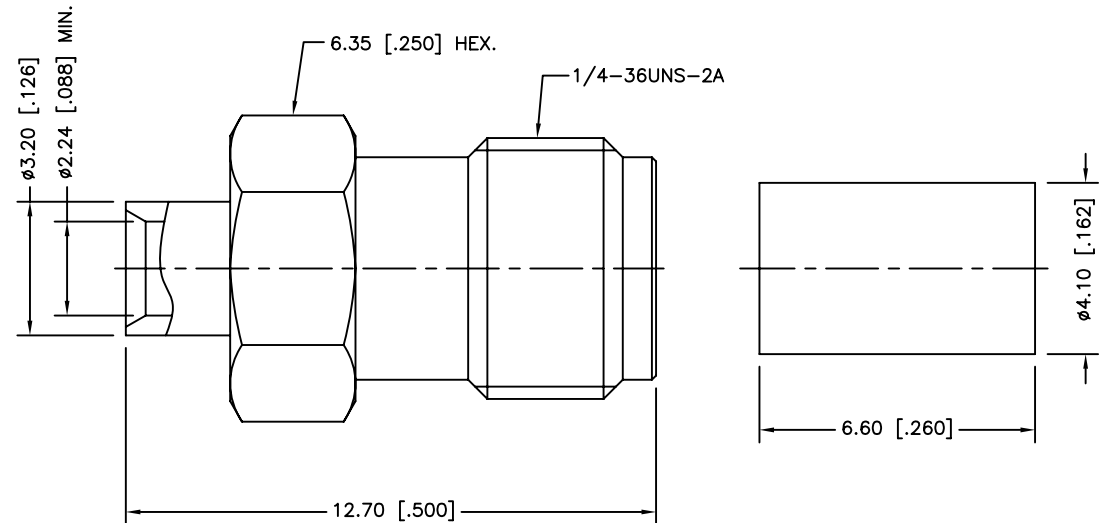
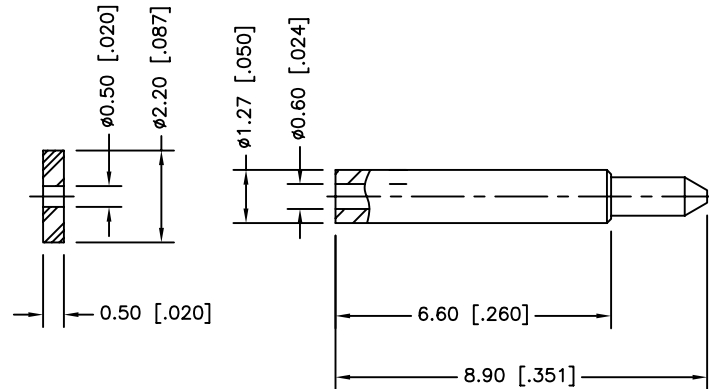


REV.	DATE	ECR NO.	DESCRIPTION
NC	04/12/12	XXXXXX	INITIAL RELEASE



RECOMMENDED
CABLE STRIPPING DIM'S



1. CONTACT PIN TO SOLDER

4	INSULATOR	PTFE	NATURAL	1
3	CONTACT PIN	BRASS	GOLD	1
2	INSULATOR	PTFE	NATURAL	1
1	BODY	BRASS	GOLD	1
DESCRIPTION	MATERIAL	FINISH	QTY	

<small>UNLESS OTHERWISE SPECIFIED DIMENSIONS ARE IN MILLIMETERS. DIMENSIONS IN [] ARE IN INCHES AND FOR CUSTOMER REFERENCE ONLY.</small> <small>UNLESS OTHERWISE SPECIFIED TOLERANCES FOR MILLIMETERS ARE:</small> 0.5 - 8mm ± 0.20mm 8 - 30mm ± 0.40mm 30 - 120mm ± 0.50mm <small>UNLESS OTHERWISE SPECIFIED TOLERANCES FOR INCHES ARE:</small> .020 - .315 = ± 0.007" .315 - 1.180 = ± 0.015" 1.180 - 4.724 = ± 0.020" DO NOT SCALE DRAWING	APPROVALS	DATE	
	DRAWN	M.ZHANG	04/12/12
	CHECKED		
	ISSUED		
	SHEET	1 OF 1	
CAD FILE	C:/CONNEX/132103RP.DWG		

<h1>Amphenol Connex</h1>			
PART DESCRIPTION			
SMA REVERSE POLARITY DIRECT SOLDER JACK (FOR .085", .086" SEMI-RIGID CABLE)			
PART NO.		132103RP	
DWG. NO.	132103RP.DWG	REV.	NC
SIZE	A	SCALE	NA