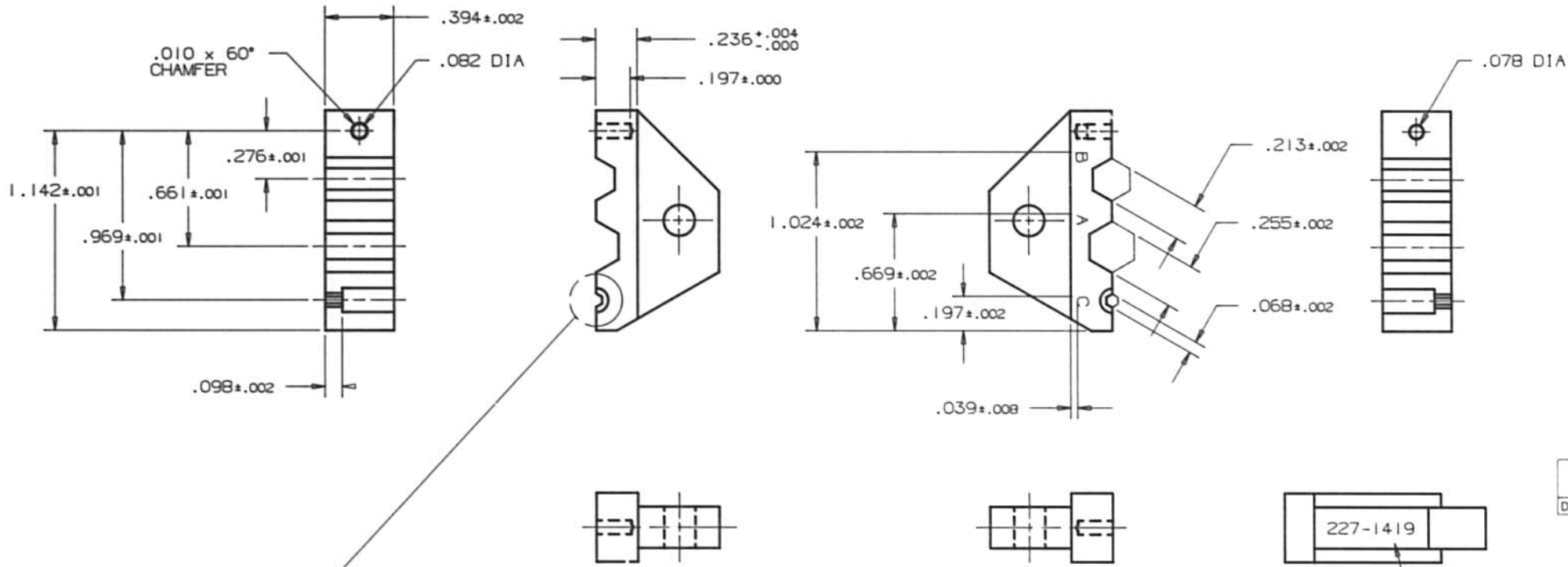


DO NOT SCALE THIS DRAWING

REVISIONS				
SYM	DESCRIPTION	DATE	E.C.O. NO.	APPR.
A	OFFICIAL ENG. RELEASE TO MFG.	12/14/88	36043	OR



227-1419
DRAWING NUMBER ISSUE
A

- NOTES:
1. MATERIAL: CRIMPING DIES - TOOL STEEL. HEAT TREAT TO ROCKWELL C52-60
 2. FINISH: FINISH ON CRIMPING SURFACES 32 MICROINCHES MAX. BLACK OXIDE COATING PER MIL-C-13924.
 3. USE WITH 227-987 HANDLE.
 4. REF: MIL CRIMP TOOL DIE SET EQUIVALENT IS 227-1221-11, -13.
 5. USE .213 HEX DIE FOR OUTER BODY CRIMP ON CABLES RG55, RG58, RG141, RG142, RG223, RG303 & RG400. USE .255 HEX DIE FOR OUTER BODY CRIMP ON CABLES RG59, RG62, RG140, RG210 & RG302. USE .068 HEX DIE FOR CONTACT CRIMP ON ALL ABOVE CABLES.

DIES ALIKE IF NOT OTHERWISE STATED. MARKING ALIGNED WITH CAVITIES STAMPED LETTERS A, B & C. TEXT HEIGHT 1/16.

PART NO.	QUAN	UOM	UNIT	DESCRIPTION	CODE	FINISH
LIST OF MATERIAL						
DRAWN BY TERRI ALBERA 11-2-88				TITLE DIE SET		
CHECKED <i>[Signature]</i> 12/9/88				DATE 12/9/88		
ENGINEER <i>[Signature]</i> 12/9/88				DATE 12/9/88		
QUALITY ASSURANCE <i>[Signature]</i> 12-14-88				DATE 12-14-88		
DATE 12/14/88				DATE 12/14/88		
CODE IDENTIFICATION 74868		DRAWING SIZE C		DRAWING NO. 227-1419		ISSUE A

REMOVE ALL BURRS, BREAK CORNERS AND SHARP EDGES .005 MAXIMUM UNLESS OTHERWISE SPECIFIED

NOTICE - These drawings, specifications, or other data (1) are, and remain the property of Amphenol Corp. (2) must be returned upon request, and (3) are confidential and are not to be disclosed to any person other than those to whom they are given by Amphenol Corp. The furnishing of these drawings, specifications, or other data by Amphenol Corp., or by any other person to anyone for any purpose is not to be regarded by implication or otherwise as in any manner licensing, granting rights or permitting such holder or any other person to manufacture, use or sell any product, process or design, patented or otherwise, that may in any way be related to or disclosed by said drawings, specifications or other data.

NEXT ASSY	USED ON	UNLESS OTHERWISE SPECIFIED DIMENSIONS ARE IN INCHES. TOLERANCES NOT OTHERWISE SPECIFIED ARE
NOTE 1		2 PLACE DECIMAL ±.015 (0.381 mm)
NOTE 2		3 PLACE DECIMAL ±.005 (0.127 mm)
		ANGLES ± 1°
		REFERENCE DRAWING NO. EAR 70264-2 PRESSMASTER 4100-2133