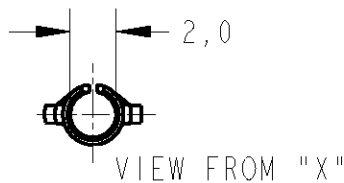
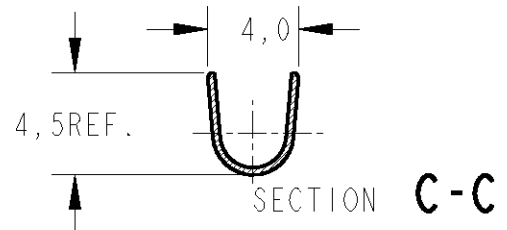
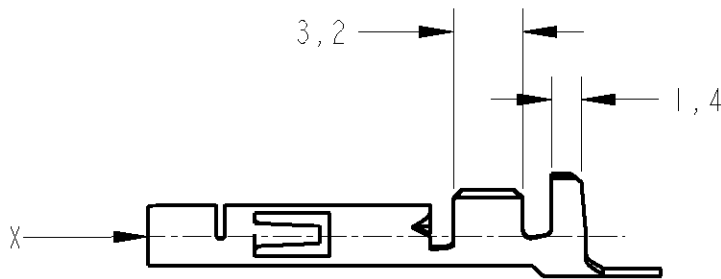
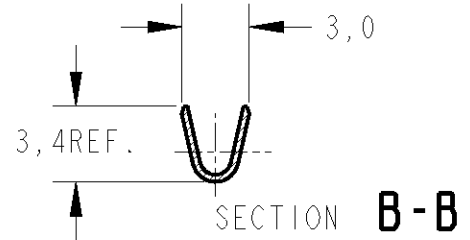
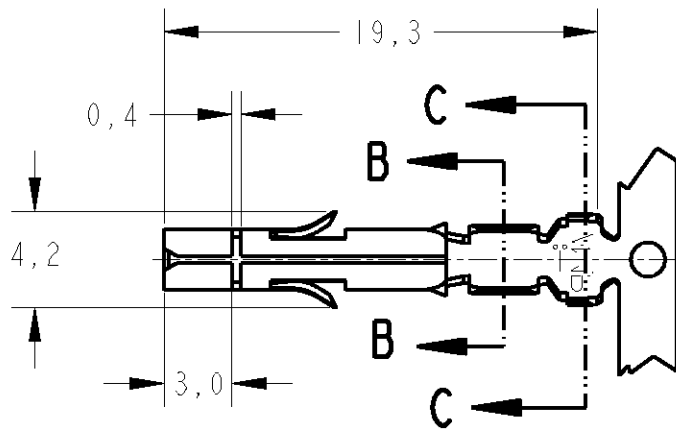


LOC	DIST	REVISIONS					
AP	-	P	LTR	DESCRIPTION	DATE	DWN	APVD
		D		REDRAW	27MAY2004	H.C	WLS
		E		REVISED BY ECR05-017239	14FEB2006	H.C	WLS



$\triangle 2$ -SUPERSEDED BY PN-926882-3 OR PN-350536-3

LOOSE PIECE	FINISH	MATERIAL	PART NUMBER
—	POST-PLATED/ESTANHADO	BRASS/LATÃO	881111-3
350550-3	TIN-PLATED/ESTANHADO	PH.BRONZE/BRONZE FOSF.	881111-2 $\triangle 2$
350550-1	TIN-PLATED/ESTANHADO	BRASS/LATÃO	881111-1

THIS DRAWING IS UNPUBLISHED. RELEASED FOR PUBLICATION 20 BY TYCO ELECTRONICS CORPORATION. ALL RIGHTS RESERVED. COPYRIGHT 20

DIMENSIONS: mm TOLERANCES UNLESS OTHERWISE SPECIFIED: 0 PLC ± 1 PLC ±0,4 2 PLC ± 3 PLC ± 4 PLC ± ANGLES ±1°	DWN H.C. CANTERI 27MAY2004 CHK W.L. STEFANI 27MAY2004 APVD - PRODUCT SPEC	MATERIAL - FINISH -
	INS. DIA. 3,30mm. APPLICATION SPEC WIRE RANGE 20/14AWG WEIGHT -	NAME SOCKET, MATE-N-LOK, UNIVERSAL TYCO Electronics TYCO ELECTRONICS do Brasil LTDA. Sao Paulo, Brasil
	CUSTOMER DRAWING	SIZE A4 CAGE CODE 00779 DRAWING NO C-881111 RESTRICTED TO - SCALE - SHEET 1 OF 1 REV E