



ADI (Analog Devices, Inc.)

## LTC1261LCS8#PBF

Hlutanúmer:

LTC1261LCS8#PBF

Framleiðandi / Vöruerki:

ADI (Analog Devices, Inc.)


Vörulýsing

IC REG SWTCHD CAP INV ADJ 8SOIC

Gagnablöð:

 LTC1261LCS8#PBF.pdf

RoHS Staða

 Leiða frjáls / RoHS samhæft

Ástand á lager

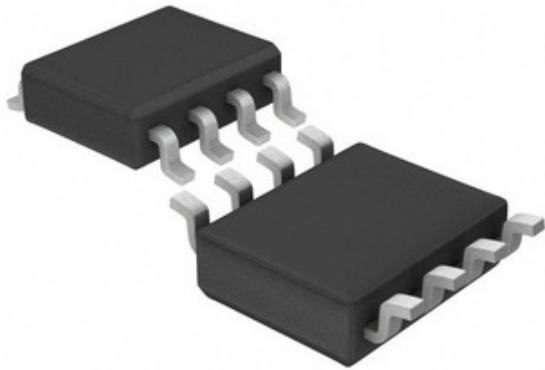
28112 pcs stock

Skip frá

Hong Kong

Sending vegur


DHL/Fedex/TNT/UPS/EMS



Mynd getur verið fulltrúi. Sjá upplýsingar um upplýsingar um vörur.

## BEIÐNI UM TILVITNUN

## Upplýsingar um LTC1261LCS8#PBF

HLUTANÚMÉR	LTC1261LCS8#PBF
FRAMLEIÐANDI	ADI (Analog Devices, Inc.)
LÝSING	IC REG SWTCHD CAP INV ADJ 8SOIC
LEIÐA FRJÁLS STAÐA / ROHS STAÐA	Leiða frjáls / RoHS samhæft
MAGN Í BODI	28112 pcs
GÖGN	 LTC1261LCS8#PBF.pdf
SPENNA - OUTPUT (MÍN / FAST)	-1.23V
SPENNA - OUTPUT (MAX)	-5V
SPENNA - INNTAK (MIN)	2.7V
SPENNA - INNTAK (HÁMARK)	5.25V
TOPOLOGY	Charge Pump
SAMSTILLTUR RECTIFIER	No
BIRGIR TÆKI PAKKI	8-SOIC
RÖÐ	-
PÖKKUN	Tube
PAKKI / TILFELLI	8-SOIC (0.154", 3.90mm Width)
OUTPUT TEGUND	Adjustable
OUTPUT CONFIGURATION	Negative
ÖNNUR NÖFN	LTC1261LCS8PBF
VINNUHITASTIG	0°C ~ 70°C (TA)
FJÖLDI ÚTGANGA	1
UPPSETNINGARTEGUND	Surface Mount
VÖKTUNARNÆMISSTIG (MSL)	1 (Unlimited)
LEIÐA FRJÁLS STAÐA / ROHS STAÐA	Lead free / RoHS Compliant
VIRKA	Step-Up/Step-Down
TÍÐNI - ROFI	650kHz
NÁKVÆM LÝSING	Charge Pump Switching Regulator IC Negative Adjustable -1.23V 1 Output 20mA 8-SOIC (0.154", 3.90mm Width)
NÚVERANDI - OUTPUT	20mA
GRUNNEININGARNÚMÉR	LTC1261

## Svipaðir merkingar

ADI (Analog Devices, Inc.) LTC1261LCS8#PBF	LTC1261LCS8#PBF dreifingaraðili	LTC1261LCS8#PBF Birgir
LTC1261LCS8#PBF Verð	LTC1261LCS8#PBF Myndir	LTC1261LCS8#PBF Image
LTC1261LCS8#PBF PDF skjal	LTC1261LCS8#PBF Sækja gagnapakann	LTC1261LCS8#PBF gagnablöð
LTC1261LCS8#PBF lager	Kaupa LTC1261LCS8#PBF	Kaupa ADI (Analog Devices, Inc.) LTC1261LCS8#PBF
ADI (Analog Devices, Inc.) LTC1261LCS8#PBF	ADI (Analog Devices, Inc.) Birgir	ADI (Analog Devices, Inc.) dreifingaraðili
ADI (Analog Devices, Inc.) LTC1261LCS8#PBF	AD LTC1261LCS8#PBF	ADI (Analog Devices, Inc.) LTC1261LCS8#PBF
Analog Devices Inc. LTC1261LCS8#PBF	Analog Devices, Inc. LTC1261LCS8#PBF	

## skyldar vörur

 <p><b>LTC1261LCMS8-4#PBF</b> Framleiðendur: ADI (Analog Devices, Inc.) Lýsing: IC REG SWTCHD CAP INV -4V 8MSOP Á lager: 50666 pcs</p> <p><b>RFQ</b></p>	 <p><b>LTC1261LCMS8#TRPBF</b> Framleiðendur: ADI (Analog Devices, Inc.) Lýsing: IC REG SWTCHD CAP INV ADJ 8MSOP Á lager: 50204 pcs</p> <p><b>RFQ</b></p>
 <p><b>LTC1261LCS8-4#TRPBF</b> Framleiðendur: ADI (Analog Devices, Inc.) Lýsing: IC REG SWTCHD CAP INV -4V 8SOIC Á lager: 51809 pcs</p> <p><b>RFQ</b></p>	 <p><b>LTC1261LCS8-4.5#TRPBF</b> Framleiðendur: ADI (Analog Devices, Inc.) Lýsing: IC REG SWTCHD CAP INV 20MA 8SOIC Á lager: 52377 pcs</p> <p><b>RFQ</b></p>
 <p><b>LTC1261LCMS8-4#TRPBF</b> Framleiðendur: ADI (Analog Devices, Inc.) Lýsing: IC REG SWTCHD CAP INV -4V 8MSOP Á lager: 49872 pcs</p> <p><b>RFQ</b></p>	 <p><b>LTC1261LCS8-4#PBF</b> Framleiðendur: ADI (Analog Devices, Inc.) Lýsing: IC REG SWTCHD CAP INV -4V 8SOIC Á lager: 58663 pcs</p> <p><b>RFQ</b></p>
 <p><b>LTC1261LCMS8-4.5#PBF</b> Framleiðendur: ADI (Analog Devices, Inc.) Lýsing: IC REG SWTCHD CAP INV 20MA 8MSOP Á lager: 41368 pcs</p> <p><b>RFQ</b></p>	 <p><b>LTC1261LIMS8#PBF</b> Framleiðendur: ADI (Analog Devices, Inc.) Lýsing: IC REG SWTCHD CAP INV ADJ 8MSOP Á lager: 20175 pcs</p> <p><b>RFQ</b></p>
 <p><b>LTC1261LCMS8-4.5#TRPBF</b> Framleiðendur: ADI (Analog Devices, Inc.) Lýsing: IC REG SWTCHD CAP INV 20MA 8MSOP Á lager: 38486 pcs</p> <p><b>RFQ</b></p>	 <p><b>LTC1261LCS8#TRPBF</b> Framleiðendur: ADI (Analog Devices, Inc.) Lýsing: IC REG SWTCHD CAP INV ADJ 8SOIC Á lager: 50357 pcs</p> <p><b>RFQ</b></p>
 <p><b>LTC1261LCS8-4.5#PBF</b> Framleiðendur: ADI (Analog Devices, Inc.) Lýsing: IC REG SWTCHD CAP INV 20MA 8SOIC Á lager: 51286 pcs</p> <p><b>RFQ</b></p>	 <p><b>LTC1261LCMS8#PBF</b> Framleiðendur: ADI (Analog Devices, Inc.) Lýsing: IC REG SWTCHD CAP INV ADJ 8MSOP Á lager: 23980 pcs</p> <p><b>RFQ</b></p>